



by JP Educational
Service



www.coreincareer.in

Guidance for your RIGHT career PATH

EMPOWER YOUR FUTURE

WE GUIDE FOR :

- Engineering
- Medical Science
- Biosciences & Biotechnology
- Pharma
- Management & Commerce
- Communication
- Multimedia & Film studies
- Computational & Applied science
- Designing
- Law
- Nios & Diploma
- Humanities & Social science

JOIN US NOW



+91 9123783438
+91 6289713594

For More Information :



coreincareer2025@gmail.com



Chandannagar, Hooghly,
West Bengal-712136



Your Ambition
OUR MISSION



ABOUT US

Core in Career is a career counselling platform dedicated to helping individuals discover their true potential and align it with the right career path. We believe that successful careers are built from a strong understanding of one's core—skills, interests, values, and personality.

Through our science-backed psychometric assessments, expert one-on-one counselling, and tailored career roadmaps, we've helped hundreds of individuals make confident, informed decisions about their futures. Whether it's selecting the right academic stream, choosing a college course, or planning a career switch, our approach is practical, personalized, and proven to work.

Our services include:

- Career and stream selection
- Psychometric testing
- College and course guidance
- Career transitions and upskilling support
- Education Loan Guidance
- Scholarship Opportunity



With certified counsellors and real-world insights, Core in Career is more than a counselling service — it's your partner in building a career you'll love.





WHAT IS CAREER COUNSELLING ?

Career counselling is a process that helps individuals explore, understand, and make informed decisions about their career paths. It involves assessing an individual's interests, strengths, skills, values, and goals to provide guidance on suitable career options. The goal of career counselling is to assist individuals in making well-informed career choices and to help them navigate the steps necessary to achieve their career objectives.



Career counsellors, also known as career advisors or guidance counsellors, typically use various tools and techniques to assess an individual's aptitudes and preferences. These may include aptitude tests, personality assessments, interviews, and discussions about personal and professional goals. Through this process, individuals can gain insights into potential career paths that align with their skills and interests.

Career counselling is not limited to students or those seeking a new job; it can be beneficial at various stages of a person's career. Whether someone is exploring career options, facing a career transition, or seeking advancement in their current profession, career counselling can provide valuable support.

In addition to helping individuals identify suitable career paths, career counselling may also involve providing guidance on developing job-search strategies, resume writing, interview skills, and networking. The ultimate aim is to empower individuals to make informed decisions about their careers and take steps towards achieving their professional goals.



BENEFIT OF CAREER COUNSELLING ?

- **SKILL DEVELOPMENT**
- **EDUCATIONAL GUIDANCE**
- **INFORMED DECISION-MAKING . CLARIFICATION OF GOALS . SELF-AWARENESS**
- **CONTINUOUS CAREER DEVELOPMENT**
- **STRESS REDUCTION**
- **JOB SEARCH STRATEGIES**
- **ENHANCED JOB SATISFACTION**
- **TRANSITION SUPPORT**
- **IMPROVED WORK-LIFE BALANCE**

WHY PSYCHOMETRIC TESTS NEEDS?

Psychometric tests are a standard and scientific method used to measure your mental capabilities and behavioral style. **These tests are designed to assess your suitability for different career paths based on your personality characteristics and cognitive abilities.**

At Core in Career, we use proven models like the **Holland RIASEC** model to help you understand your interests, personality, and the kind of work environments where you would thrive. This journey of self-discovery is the first and most crucial step towards building a fulfilling and successful career.

Interest Over Marks

Psychometric testing shifts focus from grades to personal interests, helping individuals discover careers they're passionate about—not just those they score well in.

1

Informed Decision-Making

These assessments offer clear insights into abilities and personality, enabling smarter, data-driven career and education choices.

2

Asking the Right Questions

Psychometric tools prompt self-reflection, helping individuals understand what they truly want from their future—not just what's expected.

3

The Value of Personal Connection

When paired with expert guidance, psychometric results create meaningful, personalized pathways for career success.

4

Character Defines Success

Success isn't just about skills—it's also about character. Testing helps uncover traits like resilience and leadership that shape long-term achievement.

5

Education Empowers Minds

By aligning learning paths with individual strengths, psychometric testing makes education a tool for true empowerment.

6

BEST CAREER OPTION



School Of Engineering

B.TECH: CSE | ECE | EEE | ME | CE I AE
| CSBS | AI | AI-ML

M.TECH: CSE | ECE | EEE | ME | CE | AE

DIPLOMA: CSE | ECE | ME | CE | AE



School Of Medical Science

MEDICAL : MBBS | BDS |
B.Sc Nursing (Girls & Boys) |
GNM Nursing



School Of Biotechnology & Biosciences

B.SC (H) | M.SC :

BIOTECHNOLOGY |
MICROBIOLOGY | GENETICS |
FOOD & NUTRITION |
AGRICULTURE | PSYCHOLOGY



School Of Paramedical & Allied Health Science

B.SC :

MEDICAL LAB TECH. | OT TECH
PHYSICIAN ASSISTANT | MEDICAL
RADIOLOGY & IMAGING TECH. |
OPTOMETRY | PHSIOTHERAPY |
CRITICAL CARE TECHNOLOGY



School Of Pharma

PHARMACY:

B. PHARM | D. PHARM |
PHARM.D | M. PHARM

CHOOSE YOUR DREAM CAREER



School Of Management & Commerce

BBA | MBA | MHA :
HOSPITAL MANAGEMENT | HOTEL
MANAGEMENT | HOSPITALITY
MANAGEMENT | TOURISM MANAGEMENT
DIGITAL MARKETING | HUMAN
RESOURCE | FINANCE | LOGISTIC



School Of communication Multimedia & Film studies

B.SC (H) | M.SC :
ANIMATION & MULTIMEDIA MEDIA
SCIENCE
B.A | M.A : JOURNALISM & MASS
COMMUNICATION | FILM & TELIVISION



School Of computational & Apllied Science

BCA | MCA : COMPUTER APPLICATION
B.SC (H) : ADVANCED NETWORKING
& CYBER SECURITY | FORENSIC
SCIENCE | DATA SCIENCE |
GAME DEVELOPING



School of Designing

B.SC | M.SC :
FASHION DESIGN | INTERIOR
DESIGN | PRODUCT DESIGNING,
GAME DESIGNING
B.TECH : ARCHITECTURE



School of Humanities & Social Science

B.A | M.A : ENGLISH |
ACTING | DANCING |
DRAMA
B.COM

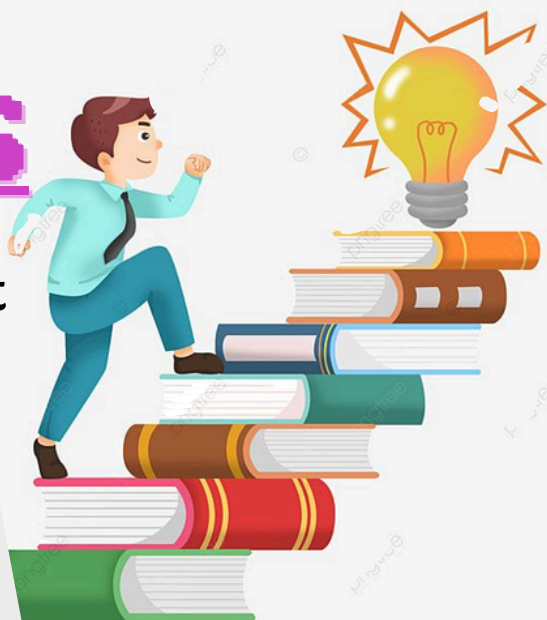


School of Law

LAW: LLM | LLB
BA. LLB | BBA LLB |
B.COM LLB

WHY CHOOSE US

- **Affordable Fees With Installment Facilities**
- **Collaboration With Top Colleges & Universities**
- **Course Curriculum Aligned With Global Certification**
- **Best Placement Opportunities From Colleges**
- **Job-ready courses Mapped to Industry Requirements**



student's view

INDIRA KUNDU ★★★★★
BBA LLB (JIS University)

"It is a very good career council organization. Because they gave me a psychometrics test through which I found the best subject for my career."

KRISHANU BISWAS ★★★★★
B.tech CSE (ADAMAS UNIVERSITY)

"They are one of the best career council organization in West Bengal, everyone must take guidance from them for their higher education."

DEPTO NEOGI ★★★★★
B.tech ECE (JISCE)

"They guided me very well for my subject and also helped me with scholarship and education loan."

AKRITY CHAKRABORTY ★★★★★
Psychology (Brainware University)

"Please contact them to know which subject will be best for your career in future, they have very Good career counselling program."

AMAY PAUL ★★★★★
BBA Business Analytic (EILM Kolkata)

"This is the best career guidance organization I got a lot of help from here I will tell everyone to contact here for your higher studies."

DISHA ROY ★★★★★
BBA in Mediascience (SNU)

"I got very good career advice for my career from the career counselors of this company ."

OUR COLLEGE PARTNERS





CONNECT WITH **US TODAY**



 **+91 9123783438 or 6289713594**

 **www.coreincareer.in**

 **coreincareer2025@gmail.com**

 **[Chandannagar, Hooghly, West Bengal-](#)**
[712136](#)

 **[www.linkedin.com/in/core-in-career-](https://www.linkedin.com/in/core-in-career-by-jp-educational-service-4a8aa8375)**
[by-jp-educational-service-4a8aa8375](https://www.linkedin.com/in/core-in-career-by-jp-educational-service-4a8aa8375)



Coreincareer | Chandannagar

Coreincareer, Chandannagar. 2 likes · 1 talking
about this. Educational Consultant

 facebook.com



by JP Educational Service